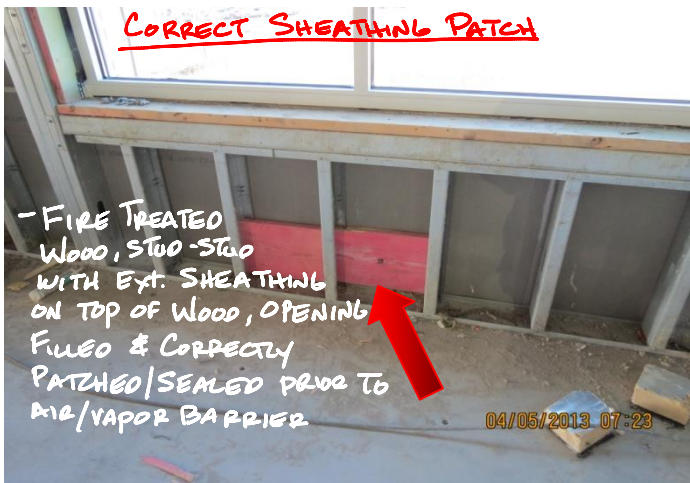
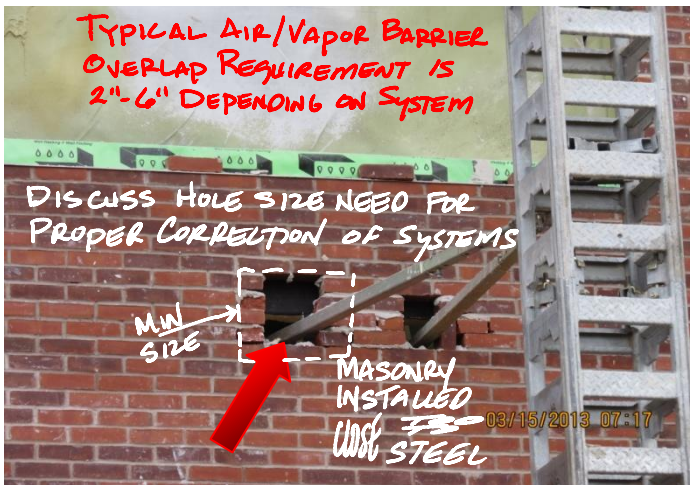


When installing masonry, a lift or stage is installed with “tiebacks” to the building, typically with the wall built around the “tieback” and corrected later.



Make sure that these “tiebacks” are discussed early with the mason, exterior sheathing, and air/vapor barrier Contractor’s...with the understanding of proper correction to the substrates, including overlaps, room for re-installation, etc.